



PŪRONGO-Ā-TAU

ANNUAL REVIEW 2024



Discover. Follow. Serve

CONTENTS

- 4 Year in Numbers
- 5 Message from Board Chair
- 6 Message from National Director
- 8 Children and Families
- 12 Youth Ministry
- 15 Youth Camps
- 18 Beyond Experience Leadership Development
- 21 SU International
- 23 Our Bicultural Journey
- 24 Resources for Life
- 26 Thanksgiving
- 28 Financials



OUR YEAR IN NUMBERS¹



597

Campers attended our adventure-based camps discovering Jesus and learning to serve the world around them.



409

Young people underwent training to become God-centred leaders of influence today and in the future.



10415

Opportunities were taken up by people to open the Bible in life-changing ways with the help of our Bible reading guides and Engage app.



959

Church workers were supported and equipped to minister to children and young people in their churches and communities.



697

Children and young people learned about life and faith through our school and community-based programmes.



1,263

Wonderful supporters donated a combined total of \$2,058,563.32.

¹These numbers were sourced from the Statement of Service Performance as well as programmes with informal registration systems.

BOARD CHAIR: Neil Walbran



Lately I have been reading the Book of Acts, and thinking how radical the gospel was. It turned the world upside down. (Some translations of Acts 17:6 use this phrase). The driving force behind our current evangelism strategy is a deep understanding of the transformative power of the gospel. Our focus is on equipping and empowering the church to effectively reach children and young people in this crucial area.

On this basis we decided to take bold steps to restructure our ministry and really drive this focus on evangelism forward last year and so we proposed a deficit budget for last year to help us do this. This was at the expense of eating into some of our accumulated surplus and it was a brave step at a time of high inflation and a cost-of-living crisis, which has impacted supporters and limited incomes for many charities. Pleasingly we have finished the year with a smaller deficit than we budgeted for. Look at the other articles in this Annual Review which provide detail on how this ministry momentum has developed and the impact on many young people.

Even in times of financial uncertainty we are proposing to press ahead this

year with another stretch budget, as members will see in the voting papers for the new budget year April 2024 - March 2025. Another deficit budget will be proposed to maintain this ministry development momentum. We have the accumulated funds to carry it.

However, I do want to also assure our faithful supporters that as a Board we are watching the sustainability of our finances very closely. We are acutely aware that while the accumulated surpluses are there to use, we cannot continue to eat into them indefinitely.

So, as per last year I want to emphasise again how this continued growth, and bold steps forward are only possible because of God's amazing provision through our faithful supporters.

In closing, I particularly thank our many volunteers, supporters, and prayer warriors for your unstinting support of Scripture Union NZ.

*Mā te Atua koutou e tiaki,
e manaaki i nga wā katoa.*

*May God bless and keep
you always.*

M. J. Walbran

NATIONAL DIRECTOR: Hilary Hague

Tēnā koutou katoa.

Ngā mihi miharo me ngā kupu aroha ki a koutou katoa.

Warm and loving greetings to you all.

The challenges came thick and fast this year with the economic downturn and rising prices affecting us all and then the Wellington office flooding in December, causing time-consuming repair work.

But there were very real joys in amongst the challenges, especially in the areas of evangelism and Bible engagement. These are both foundational values for us here in SUNZ and rightly must underlie all that we do, so it was pleasing to see them thought about so intentionally.

This year a focus group of staff and volunteers took an in-depth look at evangelism as they researched current practice and pondered how best SUNZ might share the good news of the Gospel in ways that are effective and relevant here in Aotearoa, New Zealand in 2023 and beyond. Annette Osborne oversaw the group, and it was a joy to be part of the process as it brought clarity of thinking and ideas for quality practice as we move forward.

It was also a joy to see the approach to the Bible engagement sessions for the summer camps that the Youth Camps Team took. They looked at the work done on SUNZ's Bible engagement ethos over the past couple of years, along with the evaluation of what was happening in our camps that was done by Caitlin Janes as a Venn intern. Then they produced a thoughtful, user-friendly series on the topic of hope. Feedback was positive, and the team will continue providing material and training for leaders each camping season.

In Joshua 4 we read that after the Israelites crossed the river Jordan, they were commanded to pick up 12 rocks and build a cairn to remember what God had done for them. It feels right to pause and look at some of our own rocks and remind ourselves of where God has been at work in and through Scripture Union.

► The rock of young people - this year over 2000 people have gone through our camps and other programmes. We are encouraged by the children and young people we see, who meet Jesus and grow and develop into mature Christians who are generous with their time and skills to the benefit of the wider community. Thank you, God, for children and young people.



Hilary Hague
National Director

Sam Gastrell
Camp leader and Beyond
Experience participant

Jo Overall
SUNZ Board Member

Annette Osborne,
Children and
Families Consultant

Not pictured: Lizzie Moore, Youth Consultant | Paul Dadd, Children & Family Lead Role at St Chads Church & Community Centre

► The rock of healthy ministry - look at the reports in this review. They are heartwarming reading. This year we restructured the Youth Team into two different teams, giving us five teams. (Leadership Development, Youth Camps, Youth Consultants, Children and Families, and Ministry Support.) This was done to allow for sustainable growth and quality practice. Thank you, God, for our ministries.

► The rock of volunteers - we have a rich tradition of volunteers and this year they have been particularly evident. People have been Kaiārahi for young adults, camp and workshop leaders, Board and committee members, prayed, given, helped with working bees and much more. Thank you, God, for our volunteers.

► The rock of staff - we have incredible, talented staff who work creatively and sacrificially because they feel the call of God to do so. We have 27 staff this year, many of them part time. Thank you, God, for SUNZ staff.

► The rock of prayer - we have 12 prayer groups and 696 people who pray using the Prayer Adventure. Prayer is essential to the ministry of SUNZ and we are grateful to these people. Thank you, God, for people who pray.

► The rock of provision - this year God has been faithful to provide financially. We finished the year with an intentional deficit as planned, but it was smaller than budgeted. We continue to monitor our finances carefully as we seek to be good stewards with what God has given us. The Finance and Fundraising Teams have worked very hard on our behalf. Thank you, God, for all those who gave so generously.

Of course, we acknowledge God as the rock on which we stand. We are praying these words from Psalm 31:3 as we move into the coming year and help more children and young people discover and follow Jesus and learn to serve the world around them.

Since you are my rock and my fortress, for the sake of your name lead and guide me.

Ko koe hoki tōku kōhatu, tōku pā; nā, kia mahara ki tōu ingoa, ā, ārahina ahau, tohutohungia hoki ahau.

CHILDREN & FAMILIES:

Liz Eichler - Children & Families Team Leader



In his book *Cry of Wonder*, Gerard Hughes asks the question “What is God like?” He goes on to say that he has lived this question his whole life. In her book *Faith Like a Child*, Lacy Finn Borgo takes this further.

“...it is in childhood that we begin to ask this question, whether consciously or unconsciously. This is interwoven with our fundamental questions around attachment and safety. The adults who hold the power to keep us safe and healthy also shape our pictures of God. Parents, grandparents, pastors, teachers, and family friends all contribute to our pictures of God.” (Borgo 2023, p.8)¹

Children form their first impressions of God through those around them, therefore it is vital to have the best people with our children. Children’s ministry is not about having a warm body in the room. Children’s ministry is about recognising and valuing the whole worth of a person in Christ, regardless of their age.

This is what the ministry of the Children and Families team at Scripture Union New Zealand is all about.

I want to start by acknowledging the Children and Families team. We are incredibly blessed to have such an amazing team. Though thinly spread across the country they do an amazing job. A huge thank you to Andrea Lukin (Wellington), Andrew Ramsbottom and Annette Osborne (Auckland) and Nigel Winder (Invercargill).

We are grateful for the administrative support Isla McDonald gave us for 18 months. She finished in March. Grace Clark has replaced her, and she has fitted in well to the team.



WAY2GO, our children’s ministry training conferences, continued to be our main training through the year. In 2023 our theme was The Great Invitation, and we reflected upon God’s Good News transforming lives and giving hope for the future.

We challenged those who were there to consider the changing world in which we live, how we best approach this, all while seeking to walk in the footsteps of Jesus.

We ran 10 conferences attended by 467 participants.

We are grateful for the many volunteers who lead workshops, set up venues, make cups of tea, vacuum floors.... the list is endless but is always with a smile, a sense of purpose and a desire to serve.

Here is a comment from one of our key people in the Waikato:

“WAY2GO is a great opportunity for me to bring some of our key volunteers to be encouraged, inspired, challenged, and have fun together for the day. As an independent church, the training is super helpful to build on what we cover ourselves when training. It’s also fun to catch up with other kids’ ministry leaders and share what’s going on...we all ‘get it!’”



CAMPS: We continue to run three SUPAKidz camps. The theme was Pyramid Rock about the life of Joseph. Nigel’s Southland camp was full with 54 campers (and 21 leaders). A highlight was many campers who expressed their desire to continue with regular Bible reading and prayer after camp. Some parents have reported that this has been the case.

Both Wellington and Auckland camps were smaller with 39 campers. Andrea tried a new venue for the Wellington camp in Foxton. Although a smaller camp, it meant that leaders could build deeper connections with campers.

Andrew led the Auckland camp. Half the campers were from households that were not part of a church. As a result of this camp, three of the families began attending their local church.

We have a growing desire to bridge the gap between our primary aged camps and the youth camps. Annette’s Pōnui Spring Adventure Camp for intermediates was on for the second year, with 20 campers and 13 leaders. This camp filled up very quickly with a waiting list. This year Annette had a co-leader who did a fantastic job. It was great to see the leadership team take ownership of the camp and start looking towards the future.

Here is what a local church leader had to say about Pōnui Spring Adventure:

“I am so thankful to you for providing these camp opportunities for smaller churches like us with limited resources. It’s such a blessing and encouragement, so thanks.”



¹Borgo, L.F. (2023). *Faith Like a Child: Embracing Our Lives as Children of God*, USA: IVP

And parents whose children were on this camp:

“My daughter came home from camp with a passion for reading the Bible.”

“The camp grew the children’s relationships with one another, and they came home with a stronger bond and care for each other.”

“My child came back glowing - with the biggest smile.”

“You gave them such great teaching on camp...thank you!”



NZCMN The New Zealand Children’s Ministry Network continues to be an effective way of connecting with others involved in children’s ministry. This is a group of ministry heads from Anglicans, Baptists, CCCNZ (Brethren Heritage), Presbyterians, Salvation Army, and Scripture Union. Last year a number of these people led workshops at WAY2GO and together we hosted international speaker Rachel Turner in Auckland and Wellington.

COMMUNITY CONNECTIONS

SUNZ staff help churches with school holiday programmes, whether that be with resources, training of leaders or being at the programmes to help in whatever way needed.



These are great ways of helping churches connect with their communities.

Here is what the team leader of one church commented:

“We are grateful for the support of Andrew in our community holiday programmes. Being able to bring the Bible alive to a large group of children with a huge range of stages in their faith journeys is a challenge. I know I can trust what Andrew would present.”

We continue to meet with individual churches, whether with Children’s Ministry people, church pastors, parents, or volunteers. We are available to help with resources for church programmes, afterschool clubs, holiday programmes, all things intergenerational, training and mentoring.



While we still have our Thrive workshop there has been little uptake of this in the past year as churches get back on their feet. This facilitated workshop is still available for those who want to investigate key strategies for forming lifelong faith.

HE TAONGA TE TAMAITI - THE CHILD IS A PRECIOUS TAONGA (TREASURE)

I began with a question; I will end with one.

The disciples asked Jesus, “Who is greatest in the Kingdom of Heaven?” Jesus called a little child to him and put the child among them. Then he said, “I tell you the truth, unless you turn from your sins and become like little children, you will never get into the Kingdom of Heaven. So, anyone who becomes as humble as this little child is the greatest in the Kingdom of Heaven.” Matthew 18:1-4 NLT

Let’s not be like the disciples, but more like Jesus, who welcomed children, the whole person, as is, where is, deeply and with unconditional love. There remains much to do in this space.



YOUTH MINISTRY:

Neville Bartley - Youth Team Leader



MENTAL HEALTH FIRST AID

As we mentioned in last year's review, we had added a two day fully accredited Mental Health First Aid course to what we provide to support churches. I am happy to say that by the time you read this we will have trained over 100 people across Aotearoa, New Zealand and have more courses in the pipeline. We knew this ministry was needed and the response has confirmed that. Please pray that we will continue to provide opportunities for people in ministry to attend this course across the whenua. This course is not just for paid church staff, and we are seeing many volunteers attend who are finding the training immensely helpful for their ministry.



EXODUS PRIME

Exodus Prime young leader training camp and mentorship programme equips young Christians to be leaders of impact, today and in the future. Churches nominate young leaders for this programme, and we were happy to have a cohort of 21 attend EP camp at Forest Lakes in January 2024. I am excited by the new key leaders on EP and look forward to where things will go in the future. We had participants from deep in the South Island through to just north of Auckland. Please pray for these amazing young leaders.

This has been an exciting year with substantial changes to my role and to the youth ministry structure. As you will see in this Annual Review, we have split the youth consultants' side and the camps side into two teams.

This change was needed for both ministries to grow, and I was super excited that Natalie Duchesne has been appointed to lead the camps ministry. We are already seeing growth happen from this move and I am excited to see what the future holds.

I want to take this time to thank everyone who continues to support what we do. Without the prayers, the physical support, and the financial support we could not achieve the work we do in supporting youth ministry in Aotearoa, New Zealand.

As you can see there have been changes to the SUNZ Youth Team. Eli Savill started full time in April 2023 as Youth Consultant in Waikato and Bay of Plenty area.

In July 2023, Larissa Pearce started with SUNZ as part-time Youth Consultant for Otago and Southland, covering for Lizzie Moore on maternity leave. In February 2024, Lizzie resigned to continue focusing on her role as a mum. I want to take this time to honour Lizzie for all the amazing work she did in Otago and Southland and for the amazing team member she has been. We will miss her greatly but as we always say, she may leave the paid team, but she will now join the ranks of SUNZ volunteers.

We are very blessed to have Eli and Larissa on the team and look forward to all they bring to the team and our ministry to young people.

One exciting bit of news to happen just after the end of this fiscal year is the appointment of Piper Clare to the role of Youth Consultant for the Lower North Island. Piper will continue in her PA role and as finances come in will work her way to being three days per week in the youth consultant role. Thank you all for your prayers for this role and we ask you continue to

pray for Piper as she settles into the role and pray for the remaining funds needed to move her to three days.

So, what has been happening?

YOUTH CONSULTANTS

Our youth consultants have continued to support youth pastors and their leaders across the country and have continued to provide them with innovative training. They have been working hard to produce material to support youth ministries that are relevant to the times we find ourselves in.

Our new youth leaders' training events named Anamata, have been going well. We have run three large events in Dunedin, Wellington and Auckland and we are just starting to roll out smaller events in the regions with events in Invercargill and Hamilton. 64 people attended these events with some signing on for individual mentoring. We also attended and ran workshops at a variety of denominational events throughout the year.

Please pray for our youth consultants as they support church youth ministries, and particularly as they support those who lead those ministries as many of them are feeling the effects of doing youth ministry in this currently stressed environment.

Our team of Youth Consultants pictured L-R:
Andy Banks (Auckland/Northland)
Eli Savill (Waikato/BoP)
Piper Clare as National PA (Wellington)
Larissa Pearce (Otago/Southland)





ĀPŌPŌ

The Āpōpō Mental Health & Suicide programme includes helpful information, tips and tools presented by a trained facilitator and their team of helpers. It is interactive, involving games, activities, and opportunities for participants to practise what they have learned using role-play in a safe environment. We have a version designed to run in high schools and another designed for youth groups. We are just working on a new, fast-paced 60-minute version which we think will be popular with secondary schools. We have run eight courses for 670 attendees in Auckland and Hamilton schools in the past year and are looking to branch out from there. We have also seen a fresh uptake from youth ministries and we have even run the course with a church congregation. We are excited about the future of this ministry and the impact it is having.



YOUTHSERVE AND IT'S YOUR MOVE

SUNZ Youth Team did not run these programmes and workshops this year. These ministries are in a state of redesign and revaluation. We know that they have potential to be effective, and we are adapting them to better fit the needs of our youth and high school students.



ENGAGE APP

Daily Bible Reading

ENGAGE DAILY BIBLE READING APP

Our Engage Bible App provides daily Bible readings in both English and Te Reo Māori. There were 457 downloads and 1707 launches in the period April 2023 - March 2024. The app is still functioning in its current format, but we are planning an upgrade later in 2024.

FINALLY

Please continue to pray for our youth consultants' team as we look to supporting youth ministry in Aotearoa, New Zealand.

As always, please pray for funds to keep our team in their roles. We would love to add an extra day to those who are only part time because of funding constraints.

Thank you for all your wonderful support, and may God bless you and your whānau in the year ahead.

YOUTH CAMPS:

Natalie Duchesne - National Youth Camp Team Leader



Although we've been doing camps in Aotearoa for over 90 years, the SUNZ Youth Camps Ministry Team is experiencing newness as in August 2023 we restructured within SUNZ (and separated from SU Youth) due to the growth we've experienced the last few years.

I'm excited to share that we've already exceeded our own expectations of orientation within this new team, creating positive ways of collaborating with each other, and developing our strategic plan for the next two years. Our team, Donna Beech (Camps Administration), Jayden Meads (South Island Camps Facilitator), Caitlin Janes (newly appointed North Island Camps Facilitator) and I are humbled to steward the direction of youth camps for this next season.

Shortly after the end of March 2024, I spent time with the Auckland Prayer Group and together we reflected on the Road to Emmaus passage (Luke 24:13-35).

As a group we journeyed with the two pilgrims on their walk as they were processing their grief and confusion of Jesus' death and disappearance. Along came a stranger, seeking first to understand. He asked them (although

he knew) what was wrong, and in their hospitality of spirit they opened to him. The stranger listened, built trust, and then challenged, pointing to Scripture time and time again.

When the walk was over, the two pilgrims invited this stranger into their home, the second expression of manaakitanga. At the communal act of this stranger breaking bread, their eyes were open to see Jesus revealed before them, and Jesus in his physical form disappears, leaving them to continue wondering but also now inspired to act in faith.



This viscerally reflects where we're at with facilitating youth camps. The Christ-inspired combination of good questions, development of trust, offers of challenge, revelation of Jesus and inspiration to put faith into action all encompassed within constant manaakitanga.

We've been journeying with our youth camp leaders the past few years to develop these skills and thus influence the culture of our youth camps towards these values. This will be a big focus during 2024. But first, let's look back to celebrate all that has come before us the last year.



While we try to convey the significance of youth camps for each one of our rangatahi, broader numbers matter too! We've worked hard alongside our many incredibly generous and competent volunteers.


23
Youth Camps


504
Campers


202
Leaders

18
Cooks 

Now to share about some specific youth camp programmes...

WILD WĀHINE

We're continuing with our exploration of the weekend camp model and have held more Wild Wāhine pilgrimage hikes with 12 campers attending each one. This safe space created for our female campers has become significant for those who have experienced the programme and we've enjoyed exploring the nature of physical pilgrimage with these wāhine. There are a few initiatives capturing the attention of our leaders at the moment and this is one of them, with quite a list of people who have expressed interest in being involved.



E3 is going from strength to strength, with a new 11-day wilderness expedition added to the mix. E3 Bay of Islands was launched in December 2023 and had a significant bicultural focus, as the explorers journeyed through landmarks significant to Te Tiriti o Waitangi such as the Marsden Cross and the Waitangi Treaty Grounds. Paul Humphreys, who represents the SUNZ third of the three-way E3 partnership (the other two thirds being A Rocha Aotearoa New Zealand and Adventure Specialties Trust), also facilitated the second E3 Young Adults, which had a waitlist of people having heard the success of the seven days journey the year before. We're grateful to the huge team of volunteers who help to make these expeditions happen.

YOUTH CAMPS TEAM LEADER RETREAT

Now to acknowledge the infrastructure to ensure our youth camp leaders are equipped for such big initiatives!

In the last year we held our biennial Youth Camps Team Leader Retreat. Let me tell you, the volunteers that hold the weight and responsibility of running our youth camps are some very switched-on people! We had a rich three days together in Pirongia, Waikato, exploring topics such as safety and mental health, camp culture building, Bible engagement resources, maximising the strengths of a team, and more.

These young adults are passionate about facilitating holistically safe programmes, while curating space in the outdoors for youth to connect with their Creator. The creativity and passion of our Team Leaders is evident in all they plan and do! I'm excited to share that this coming year, we have even more names to add to the mix, and our focus on the development of these new Team Leaders is already under way.

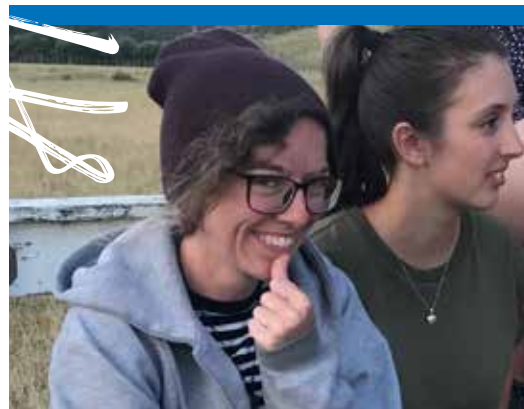


GATHER: YOUTH CAMPS LEADERSHIP WEEKENDS

Another form of equipping our leaders, is in the form of GATHER North, and GATHER South - youth camps leadership weekends. There are three pillars of these events:

- ▶ *Upskilling* our leaders with practical workshops to develop their facilitation skills and practical understanding.
- ▶ *Fostering* connection between each other so that their involvement in SUNZ is self-sustaining and long-term.
- ▶ *And faith formation*, acknowledging the varied seasons of faith experienced by our leaders, and that we have a responsibility to input into their spiritual health so that even though they might come to camp with questions themselves, they will also come with a full cup to outpour to campers.

We had 88 leaders attend the three GATHER weekends in 2023, and plan to run five gatherings around Aotearoa in 2024.



BEYOND EXPERIENCE:

Paul Humphreys - National Leadership Development Facilitator



The past year has seen Beyond Experience (BE) establish itself as an integral part of the SUNZ movement in Aotearoa, New Zealand, with an increasing number of young people serving and volunteering through the BE leadership development programme.

In 2023 we invited 20 participants to BE 1st year and 16 chose to continue with BE 2nd year mostly expressed through their chosen Stream Project. We then renamed the year levels to Tuatahi and Tuarua respectively as part of SUNZ's continuing commitment to our bicultural journey.

Our annual BE retreat was held in April 2023 at Woodend Christian Camp. We call this 'The Weekend', and it is a major part of the BE experience. It was particularly pleasing to see BE'ers from way back now leading and facilitating in that space, including with music, emceeing and facilitating Bible engagement. It was fulfilling to see that while BE has a long-term goal of leading

and shaping Aotearoa, New Zealand society, there are strong examples of that same leadership already expressing itself.

The guiding principles of BE this year were framed around 1 Corinthians 1:26-31, with exploration and facilitation around who Christ Jesus has become for us through wisdom, righteousness, holiness and redemption.

The largest increase in 2023 was BE Tuarua pursuing a Stream Project. A Stream Project (SP) allows BE Tuarua to pour their much-valued volunteer hours into a project they are enthusiastic about. By the end of calendar year 2023 we have seen the completion of the following projects:

- ▶ Anna Christensen created a resource for high schoolers to share the gospel with their friends.
- ▶ Briana Voykovich had significant leadership involvement at Pōnui Senior camp.
- ▶ Charis Allison created a biculturalism resource.
- ▶ Emily Harrex was part of the team that ran GATHER South and led Bible Engagement.

- ▶ Evelyn Barber created a resource to assist young adults to grow in their faith after attending a SUNZ camp.
- ▶ Isaac Bayldon prepared for and passed the NZOIA Bush 1 qualification.
- ▶ Josh Wright created a way to measure carbon emissions from camps so that they can be offset.
- ▶ Malakai Mangion created a plant identification resource for the Te Anau area.
- ▶ Patrick San Jose had leadership responsibilities at GATHER North in Spring and at Pōnui Junior camp.
- ▶ Sam Gastrell was a member of the SUNZ Evangelism Focus Group.
- ▶ Sarah Binnie has been preparing for and will sit the NZOIA Bush 1 qualification in April 2024.
- ▶ Shelley Huggins was part of the team that ran GATHER North in Spring.
- ▶ Tash Rangī created a resource for camp leaders to provide care for and manage mental health related incidents on camps.
- ▶ Tim Cleland prepared for and passed the NZOIA Bush 1 qualification.

Our BE Kindred participants, Imogen McQueen and Jack Wilson worked one day a week for SUNZ up to November 2023. Over their time with us we met online for weekly spiritual practices and reflections, Bible engagement and feedback on their projects within SUNZ. Imogen focused on improving



systems within our movement, especially around gear and equipment and first aid in the North Island. Jack took a slightly different approach, creating an 8-hour workshop framed around enhancing and equipping leaders understanding of sustainability and strategies. Both Jack and Imogen also served on SUNZ camps throughout the year as Team Leader or as a Key Leader.

The BE Kindred contract is for a 10-month period, working 165 hours on SUNZ projects. In February 2024, we signed on Annabelle McLennan, Jesse Major, and Kaitlin Sampson, all from South West Baptist Church (SWBC), Christchurch. We are fostering a strong relationship with this church which also includes two other young adults who are part of BE Tuatahi. SUNZ has deep roots with SWBC with numerous camp leaders and people who initiated and shaped E3 expeditions.

As always BE is deeply indebted to Beth Coates. Not just an administrator, Beth saw her work hours with SUNZ increase last year. This reflected the increased ministry focus she is now having around BE

and with young adults and especially BE Kindred. Beth has also relocated to Christchurch and now is based in our wonderful sun-drenched office at Beckenham Methodist Church.

The BE programme is funded by Longview Trust, and we are sincerely grateful for their support and input into the development of leadership of our young people.

As always, we crave your prayers for ongoing financial support and for the holy depth of listening and conversation that Kaiārahi and BE'ers have. And of course, for our young people who are living out their faith in difficult times. However, with all of you cheering them on the future is bright for a faith-filled Aotearoa, New Zealand. We thank God for you too.



SU INTERNATIONAL:



In over 120 countries, staff, volunteers, children, young people, and their families are participating in the ministry of Scripture Union, in varied and creative ways.

Scripture Union staff in Ukraine gather around a table to plan their summer camps, amid war. Young people in Latvia sign up to lead on camps, and young leaders in Burundi equip church leaders to train young people to start small businesses. There are approximately 25 million children around the world impacted by the work of SU.

Scripture Union has a small international team that helps support the SU global family through training, resourcing, and support. The key focus of this past year has been to support

national movements in their Bible engagement, resource development and Child Protection.

Annette's role with SUI began in 2017. She has been seconded by SUNZ for 40% of her time to work in the children and families team for SUI.

This means that SUNZ contributes significantly to the work of SU around the world. She finds it a joy to share our experiences from here in Aotearoa, as well as to learn from a global perspective and to bring that into her work with SUNZ.

In March, more than 300 Scripture Union representatives from 100 countries attended the Global Gathering in Malaysia. This is held once every five years or so and this



— OUR BICULTURAL JOURNEY:

year Hilary Hague and Mark Nichols attended on behalf of SUNZ. Part of this time is the formal AGM, and much of the time is spent thinking through issues that are facing us across the world and discerning together where God is leading SU in the next five years.

A particular joy at this event was to have 50 young leaders there, as an integral part of our discernment process as we looked at how we are shaped and led by the voices of children and young people. SUNZ was able to send Natalie Duchesne, as a Young Ambassador,

and her contribution was much appreciated. She facilitated a group of young leaders who challenged us to think through creation care and sustainability. The ongoing conversations from these Young Ambassadors will have great importance for our global movement in the future.

We have much to be grateful for as the global family of Scripture Union.

Annette Osborne
Children and Families Consultant

When praying into the bicultural journey ahead for SUNZ, God gifted the following words to Hilary through a mana whenua from Te Ātiawa:

There is a field like any field you would see in Aotearoa being toiled and prepared for planting. Scripture Union Aotearoa along with all that it encompasses is that field. The toiling of that field is the work that has been done and continues to be done on this bicultural journey by Scripture Union Aotearoa, its staff, and ministries.

The first part of this picture is a call to Scripture Union to keep preparing that soil, so it is fertile and ready to go. This is your role to continue with the work you have begun in preparation.

The second half of this picture is that while Scripture Union does all they need to ready the soil, the seeds themselves are the tangata whenua who will come and plant seeds in that soil with all they have and who they are, to enrich the work of Scripture Union in an authentic, mana-filled way.

This year we sought to challenge ourselves to change in ways that are deep and hopefully profound, but also enable us to be ready for the seeds to be planted.

► We have employed Gwen Hague (Ngāti Raukawa, Ngā Puhi, Te Rarawa) on a short-term contract as Māori Strategic Advisor. Her help has been

invaluable, and we are very blessed to have her.

► We encourage and resource all staff to complete up to Level 2 in Te Reo.

► We have held workshops and produced resources for staff including exploring what He Whakaputanga and Te Tiriti o Waitangi mean, learning mihi, preparing and giving a mihi whakatau, waiata and karakia.

► Luke Kaa-Morgan (Tainui Āwhiro, Ngāti Tahinga, Pākehā) has helped the Board explore their role in our bicultural journey.

► We are building relationships with our Māori campers and leaders we can encourage within SUNZ. This is a long-term goal, and we believe it will bear fruit over the next few years.

We are very glad for funding from Longview Trust to help us do these things.

Nō reira, tēnā koutou katoa anō.
Mā te Atua e whakamānawa te mahi o ō koutou ringaringa.

Hilary Hague National Director
Gwen Hague Māori Strategic Advisor



RESOURCES FOR LIFE:

AnnaMarie Slessor, Resources & Office Administrator



Resources for Life (RFL) ended the April 2023 - March 2024 financial year with a small surplus of \$769, and in an improved position from the previous year.

The first chart shows SUNZ Resources Income over 10 years from 2015-2024.


This shows income from sales of Bible Reading Guides continues to be the main source of income. There is a significant drop in sales of SU Brand stock, and an increase in donations to RFL ministry.

The Bible reading guides are Daily Bread and Encounter with God. The content is published by Scripture Union England and Wales and the books are designed and printed in Wellington. SUNZ pay 2% royalties for the content. Donations to RFL ministry totalled \$13,369. Most donations are received with Bible reading guide subscription renewal payments.


These donations cover operating costs and this year have offset the postage shortfall between Income \$10,946 and Expenses \$13,511. Postage is a charge line on all sales.

Sales of Bible Reading Guides totaled \$40,956, a drop of 14.64% trading income.


In total,



4573
Books Distributed



665
Subscribers



3
Wholesale Bookstores

At 31 March 2024:
565 direct subscribers

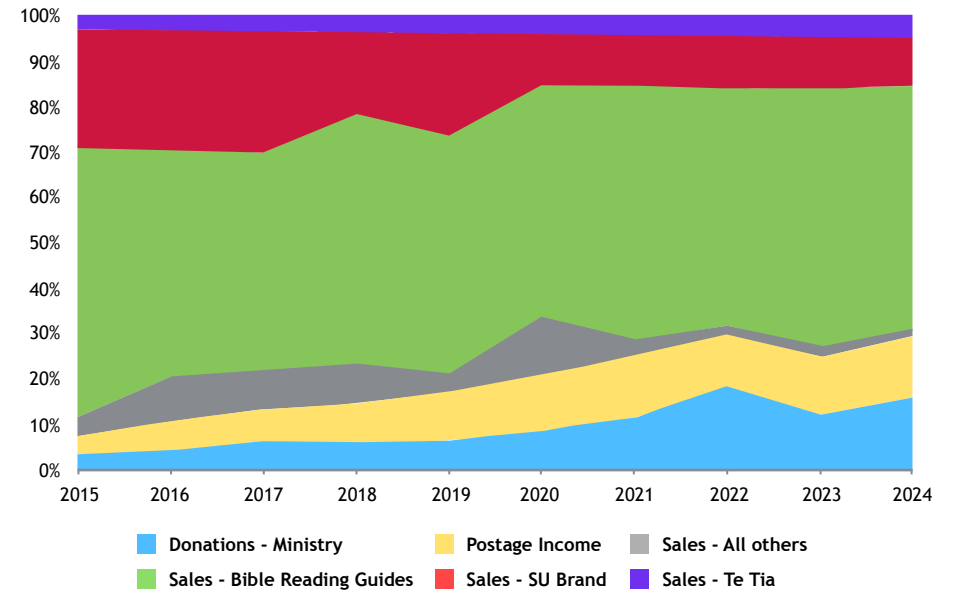
36 Bible reading reps who distributed 195 books each quarter

3 bookstores (Bible Society, Christian Superstore, and Sonshine Book Centre), who distributed 262 books (based on Jan-Mar 2024 issue)

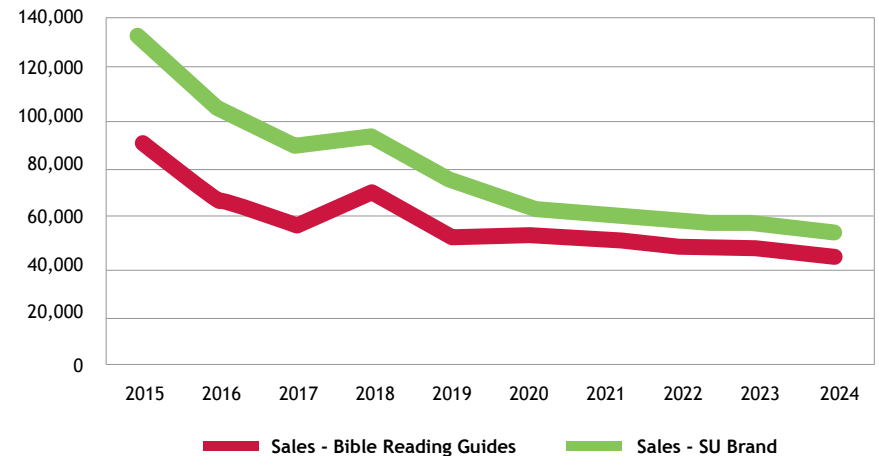
Over the ten years from 2015 to 2024 there has been a 50% drop in sales income from Bible reading guides, from \$90,281 to \$44,582. There has also been a 76% decrease in sales of SU Brand titles as there is less material published and in print.

Sales of Te Tia dropped slightly by 6.86% to \$4,133, with 5,286 reading cards sold and distributed across

SUNZ RESOURCES INCOME 2015 - 2024



10 YEAR TREND



New Zealand, Australia, Cook Islands. Stock valued at \$437.00 remained at end of year stock take.

Sales - All others are resource materials purchased from other publishers as needed.

Total operating expenses remained relatively on par with FY22-23. Thank you for supporting RFL by purchasing and promoting our resources and Bible reading guides and donating to this ministry.

THANKSGIVING

VOLUNTEERS & SUPPORTERS

A huge thanks to everyone who makes SUNZ ministries possible:

- **Camp Volunteers:** Their hard work and dedication make our camps possible. From cooking to leading activities and Bible sessions, they introduce children and youth to Jesus and nurture their faith.
 - **Event Support Teams:** These teams assist with SUNZ conferences, workshops, and training events. They manage sites, accommodations, and refreshments, helping to equip youth and children's workers.
 - **Prayer Groups:** Twelve nationwide prayer groups regularly pray for SUNZ. Their unwavering commitment is invaluable, and we deeply appreciate their support.
 - **Administrators:** Volunteers ensure SUNZ operates smoothly behind the scenes with their time and skills.
 - **Supporters:** Our supporters give, pray, and spread the word about SUNZ, showcasing God's provision through their contributions.
- ▶ **1,263** individuals, trusts and businesses supported us financially over the FY 23-24 year.

▶ **672** prayer warriors received the bimonthly SUNZ Prayer Adventure newsletter encouraging them to remember SUNZ in their daily prayers.

▶ **2413** people received staff prayer letters, keeping them up to date with staff workers' news, and supporting them in prayer.

▶ **37** Bible Reading Representatives helped to promote and distribute our Bible Reading Guides to groups and churches around New Zealand.

BOARD

We give thanks for the dedication and faithful service of the SUNZ Board and Finance Committee:

- **Neil Walbran** (Chair)
- **Ruth Early** (Treasurer)
- **Hilary Hague** (National Director)
- **John Cleary**
- **Jason Masters**
- **Mark Nichols**
- **Jason Kelsey**
- **Joanna Overall**
- **Meredith MacKenzie** (Observer)

FINANCE COMMITTEE

- **Ruth Early** (Chair)
- **Alastair Boulton**
- **Hilary Hague**
- **Meredith MacKenzie**
- **Mark Nichols**
- **Andrew Slessor**

BEQUESTS

We are humbled and honoured to have been remembered by the following people in their final wishes:

- Allan David Pettigrew**
- Athol Agnew**
- Cor Reyngoud**
- Harry Russell**
- Jean Burns Smith**
- Mabel Lawrence Garrity**
- Patricia MK Harris**
- Pauline Mary Boyes**
- Velma June Dixon**

We appreciate their gifts, which will bless the children and young people we serve.

TRUSTS, CHURCHES, AND ORGANISATIONS WHO GAVE MORE THAN \$1,000:

- Ann Sinclair Charitable Trust
- Arohanui Charitable Trust
- B R Malcolm Foundation
- Bollard Charitable Trust
- Broderick Road Chapel
- Cornelius Charitable Trust
- Daphne Ford Trust
- David Ellison Charitable Trust
- Decal Trust
- Dimock Charitable Trust
- Eden Community Church
- Fraser Charitable Trust
- Glenfield Community Church
- GraceCity Church
- G & S Vickers Charitable Trust

- Gumgo Trust
- Iona Properties Ltd
- Jones Missionary Trust
- Kaiarahi Trust
- KB and RJ Taylor Charitable Trust
- Lichfield Lands Incorporated
- Light of Life Chinese Church
- Lochiel Community Church
- Longview Trust
- Max Architectural Design Charitable Trust
- Merit Car Company
- Milford Baptist Church
- Nelson Christian Trust
- One T Six Trust
- Otama Missionary Trust
- PAC Distribution Group - Methodist Church of New Zealand
- PC & HPW Green Charitable Trust
- Porirua East Gospel Chapel
- River Valley Baptist Church
- Roger Vernon Charitable Trust
- Rosedale Bible Chapel
- Shepton Trust
- St Chad's Anglican Church
- Stoney Farm Charitable Trust
- Soul Purpose Trust 1999
- The Synod of Otago & Southland
- The Tidd Foundation Incorporated
- The Guy Colville Nicholson Charitable Trust
- Te Ora Hou Trust
- Waidale Missionary Trust
- W Crighton Charitable Company Ltd
- Wellington South Baptist Church
- Wilberforce Foundation
- Windsor Community Church Missions Group
- Wyndham Presbyterian Church



Thank
YOU

FINANCIALS

OPERATING RESULTS

The Lord continues to supply the financial needs of Scripture Union, through our generous supporters. SUNZ achieved a minimal operating deficit of \$4,080 for the 2023-2024 financial year, compared to the original budget deficit of \$44,020. Total revenue exceeded the budget by 1.5%, despite the challenging economic environment of higher living costs that many of our supporters have endured.

Total operating expenses increased by \$195,495 in FY2023-24 compared to the previous year, with increases in employee related costs contributing to 84% of this amount.

FINANCIAL POSITION

SUNZ continues to be in a stable financial position. Total cash and current assets on the balance sheet at 31 March 2024 were \$754,759 with an additional \$2,010,000 in bank term investments beyond the one-year timeframe. Equity includes the Development Fund of \$947,790 which is set aside for special projects in the future.

To enable SUNZ to better manage its resources and to assess the performance of the organisational activities, resources are categorised into the Funds documented in Table 1 below:

FINANCIAL PERFORMANCE BY FUND | YEAR TO 31 MARCH 2024

	SCRIPTURE UNION TOTAL	GENERAL FUND	TEAM SUPPORT FUND	DEVELOPMENT FUND	CAMP WORKING GROUP FUNDS	OTHER MINOR FUNDS	PROPERTY
(NZD) REPORTED ANNUAL SURPLUS/ (DEFICIT)	(4,080)	120,819	(139,112)	16,635	(4,161)	1,740	-
EQUITY	3,451,561	936,728	60,597	947,790	150,886	102,646	1,252,913

These summary financial statements have been extracted from SUNZ full financial statements. Summary financial statements do not provide the same level of information/ understanding as full financial statements. The full financial statements were approved by the SUNZ Board on 5th July 2024 and both periods covered by the following financial summary were audited by accountants BDO who provided an unqualified audit opinion.

The full financial statements for both years include an explicit and

unreserved statement of compliance with Public Benefit Entity Accounting Standards - Reduced Disclosure Regime, and both have been prepared in accordance with these standards.

These summary financial statements have been prepared in accordance with the following accounting standard released by the External Reporting Board: Public Benefit Entity Financial Reporting Standard 43.

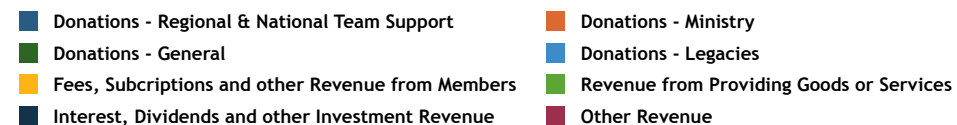
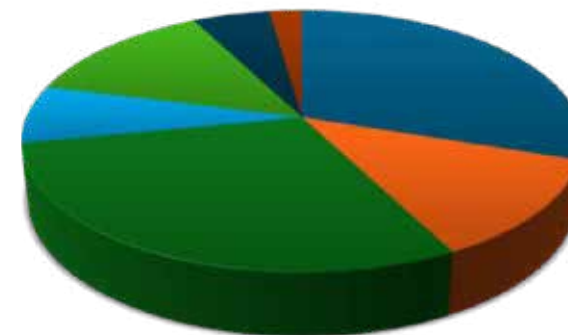
A copy of the full financial statements may be obtained by writing to Scripture Union, PO Box 760, Wellington 6140.



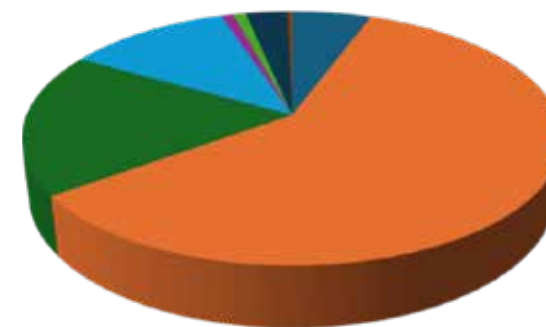
SCRIPTURE UNION NEW ZEALAND INCORPORATED
STATEMENT OF FINANCIAL PERFORMANCE
FOR THE YEAR ENDED 31 MARCH 2024

	31 MARCH 2024	31 MARCH 2023
	\$	\$
REVENUE		
Donations - Regional & National Team Support	713,878	739,774
Donations - Ministry	290,667	237,940
Donations - General	695,993	644,769
Donations - Legacies	169,485	162,550
Fees, subscriptions and other revenue from members	-	200
Revenue from providing goods or services	317,847	306,679
Interest, dividends and other investment revenue	125,891	63,194
Other revenue	53,046	44,236
TOTAL REVENUE	2,366,807	2,199,342
EXPENSES		
Expenses related to public fundraising	134,373	128,803
Volunteer and employee related costs	1,405,607	1,242,293
Costs related to providing goods or services	433,097	411,427
Camps & Event Costs	277,232	272,937
Grants and donations made	20,000	20,000
Audit expenses	21,578	17,439
Depreciation and Amortisation	72,595	75,292
Finance & Bank Charges	6,406	7,201
TOTAL EXPENSES	2,370,887	2,175,391
GAIN/LOSS ON REVALUATION	-	-
SURPLUS/(DEFICIT) FOR THE YEAR	(4,080)	23,950

INCOME FOR FINANCIAL YEAR 2023/24



EXPENDITURE FOR FINANCIAL YEAR 2023/24



SCRIPTURE UNION NEW ZEALAND INCORPORATED
STATEMENT OF FINANCIAL POSITION AS AT 31 MARCH 2024

	31 MARCH 2024	31 MARCH 2023
	\$	\$
ASSETS		
Current Assets		
Bank accounts and cash	686,995	2,459,416
Debtors and prepayments	50,719	182,864
Inventory	17,045	16,485
TOTAL CURRENT ASSETS	754,759	2,658,765
Non-Current Assets		
Property, plant and equipment	1,618,136	1,650,438
Investments	2,010,000	-
TOTAL NON-CURRENT ASSETS	3,628,136	1,650,438
TOTAL ASSETS	4,382,895	4,309,203
LIABILITIES		
Current Liabilities		
Creditors and accrued expenses	86,492	102,812
Employee costs payable	190,721	164,118
Unused donations and grants with conditions	567,843	493,054
TOTAL CURRENT LIABILITIES	845,056	759,983
TOTAL NON-CURRENT LIABILITIES	86,279	93,581
TOTAL LIABILITIES	931,335	853,564
TOTAL ASSETS LESS TOTAL LIABILITIES (NET ASSETS)	3,451,561	3,455,640
TOTAL ACCUMULATED FUNDS	3,451,561	3,455,640

SCRIPTURE UNION NEW ZEALAND INCORPORATED
STATEMENT OF CASH FLOWS FOR THE YEAR ENDED 31 MARCH 2024

	31 MARCH 2024	31 MARCH 2023
	\$	\$
CASH FLOWS FROM OPERATING ACTIVITIES		
Cash was received from:		
Donations, fundraising and other similar receipts	2,063,932	1,878,578
Fees, subscriptions and other receipts from members	187,457	175,933
Receipts from providing goods or services	174,901	67,070
Interest, dividends and other investment receipts	127,867	48,291
Cash was applied to:		
Payments to employees	(1,347,670)	(1,189,327)
Payments to suppliers	(914,899)	(890,627)
Donations or grants paid	(20,000)	(20,000)
Net GST	10,606	(5,580)
NET CASH FLOWS FROM OPERATING ACTIVITIES	282,195	64,337
CASH FLOWS FROM INVESTING AND FINANCING ACTIVITIES		
Cash was received from:		
Receipts from the sale of property, plant and equipment	-	2,500
Cash was applied to:		
Payments to acquire property, plant and equipment	(44,616)	(45,511)
Payments to purchase investments	(2,010,000)	
NET CASH FLOWS FROM INVESTING AND FINANCING ACTIVITIES	(2,054,616)	(43,010)
Net Increase / (Decrease) in Cash	(1,772,422)	21,327
Opening Cash	2,459,417	2,438,090
Closing Cash	686,995	2,459,417
This is represented by:		
Bank Accounts and Cash	686,995	2,459,417

SCRIPTURE UNION NEW ZEALAND INCORPORATED
STATEMENT OF CHANGES IN EQUITY
FOR THE YEAR ENDED 31 MARCH 2024

FOR THE YEAR ENDED 31 MARCH 2024	TOTAL NZD	GENERAL FUND	RESERVE REVALUATION		TEAM SUPPORT FUND	J& M LAIRD FUND	KERSLEY FUND	DEVELOPMENT FUND	CAMP & WORKING GROUP FUNDS
BALANCE AT BEGINNING OF YEAR	3,455,640	815,909	1,252,913		199,708	4,463	96,444	931,156	155,048
Reserve transfers in	56,072	56,072							
Reserve transfers out	(56,072)							(23,405)	(32,667)
Surplus or deficit from continuing operations	(4,080)	64,746	-		(139,112)	(3,356)	5,095	40,040	28,506
Other comprehensive income and expenses -Gain/losses on revaluation of property									
TOTAL SURPLUS/ (DEFICIT) FOR THE YEAR	(4,080)	120,819	-		(139,112)	(3,356)	5,095	16,635	(4,161)
BALANCE AT END OF YEAR	3,451,561	936,728	1,252,913		60,597	1,107	101,539	947,790	150,886
FOR THE YEAR ENDED 31 MARCH 2023	TOTAL NZD	GENERAL FUND	RESERVE REVALUATION		TEAM SUPPORT FUND	J& M LAIRD FUND	KERSLEY FUND	DEVELOPMENT FUND	CAMP & WORKING GROUP FUNDS
BALANCE AT BEGINNING OF YEAR	3,431,690	797,339	1,252,913		191,773	4,345	92,908	940,789	151,624
Reserve transfers in	64,737	64,737							
Reserve transfers out	(64,737)							(33,250)	(31,487)
Surplus or deficit from continuing operations	23,950	(46,166)	-		7,935	118	3,536	23,616	34,912
Other comprehensive income and expenses -Gain/losses on revaluation of property									
TOTAL SURPLUS/ (DEFICIT) FOR THE YEAR	23,950	18,571	-		7,935	118	3,536	(9,633)	3,424
BALANCE AT END OF YEAR	3,455,640	815,909	1,252,913		199,708	4,463	96,444	931,156	155,048



WELLINGTON PŌNEKE NATIONAL SUPPORT CENTRE
04 385 0485 | 0508 423 835 | info@sunz.org.nz |
9A Oxford Terrace, Mt Cook, Wellington 6021
PO Box 760 Wellington 6140

AUCKLAND TĀMAKI MAKAURAU
auckland@sunz.org.nz | 09 379 9363 |
Office Suite 1, Level 2, 80 Central Park Drive
Henderson, Auckland 0610

HAMILTON KIRIKIRIROA
13B Kent Street, Hamilton 3204

CHRISTCHURCH ŌTAUTAHI
52 Martin Avenue, Beckenham,
Christchurch 8023

INVERCARGILL WAIHŌPAI
03 214 1834 |
212 Bourke Street
Waverley, Invercargill 9810

He rama tāu kupu ki ōku waewae
Your word is a lamp to my feet Psalm 119:105

SUNZ is a member of the Scripture Union
International Family

Producer: Peilin Cheng
Editor: AnnaMarie Slessor
Designer: Anna Juden