



THE

ANNUAL

REVIEW

2023



DISCOVER

FOLLOW

SERVE

CONTENTS

OUR YEAR IN NUMBERS 3
 BOARD CHAIR 4
 NATIONAL DIRECTOR 5
 CHILDREN AND FAMILIES 8
 YOUTH MINISTRY 12
 BEYOND EXPERENCE 16
 INTERNATIONAL 18
 ENVIRONMENTAL SUSTAINABILITY 19
 RESOURCES FOR LIFE 20
 THANKSGIVING 22
 FINANCIALS 24

3
4
5
8
12
16
18
19
20
22
24

OUR YEAR IN NUMBERS¹

600
CAMPERS

attended our ADVENTURE-BASED CAMPS, discovering Jesus and learning to serve the world around them.

226 YOUNG PEOPLE
underwent training to become **GOD-CENTRED LEADERS** of influence today and in the future.

17730
estimated hours of work by **SUNZ VOLUNTEERS** making an impact on the lives of thousands of children and young people around New Zealand.

12866
opportunities were taken up by people to open the Bible in life-changing ways with the help of our **BIBLE READING GUIDES.**

2160
CHURCH WORKERS
were **SUPPORTED** and **EQUIPPED** to minister to children and young people in their churches and communities.

988
CHILDREN AND YOUNG PEOPLE

learned about **LIFE AND FAITH** through our **SCHOOL AND COMMUNITY-BASED PROGRAMMES.**



BOARD CHAIR

AS A BOARD WE ARE CONTINUALLY AMAZED AT THE FAITHFULNESS OF GOD'S PROVISION FOR SCRIPTURE UNION THROUGH THE YEARS. OUR COMMITTED AND GENEROUS SUPPORTERS HAVE BEEN INSTRUMENTAL IN THIS GROWTH AND PROGRESS, AND WE ARE DEEPLY GRATEFUL. IT IS INSPIRING TO SEE HOW GOD CONTINUES TO BLESS SCRIPTURE UNION, AND IT IS A PRIVILEGE TO BE PART OF THIS ONGOING MISSION.

This faithful provision has enabled us to develop new ministries and expand on existing ministries. This includes programmes like developing and expanding our leadership development stream through the "Beyond Experience" (BE) ministry of training and mentoring young leaders. As a Board we are benefiting from the fruit of this development with capable, confident young people serving on the Board as governance interns for the past two years. We are pleased to present one of them, Jason Kelsey, to you this year for election as a full Board member.

This faithful provision has also enabled us to budget for intentional growth in our ministries. Over the last 5 years we have managed to retain a small surplus from each years' budget to develop a small but growing ministry fund. This retention of previous years surpluses has enabled us to take the bold step this year of proposing a budget that utilises this at the expense of a proposed operating deficit for the year. We realise this is a big step of faith and took the precaution of writing to members in April to seek feedback on this proposed bold step before our AGM in September.

One of the areas we are considering is to separate the Youth and Camp teams to allow each team to be more sustainable and focussed on their areas of expertise and passion.

We want to emphasise again how our ongoing mission and bold steps of faith are only possible because of God's amazing provision through our generous and faithful supporters. We sincerely thank our many volunteers, supporters, staff, and prayer warriors for your great-hearted support of Scripture Union NZ.

MĀ TE ATUA KOUTOU E TIAKI, E MANAAKI I NGĀ WĀ KATOĀ.
MAY GOD BLESS AND KEEP YOU ALWAYS. ▲

NEIL WALBRAN

Board Chair



NATIONAL DIRECTOR

HILARY HAGUE
National Director

TĒNĀ KOUTOU KATOĀ.
NGĀ MIHI NUNUI ME NGĀ KUPU AROHA KI A
KOUTOU KATOĀ.
WARM AND LOVING GREETINGS TO YOU ALL.

I started with Scripture Union New Zealand as National Director five years ago, and around that time, God gave me an image to pray into. It was of an old-fashioned sailing ship listing in the waves.

That is no longer the picture I have of SUNZ. Under God's direction, our team have turned the ship to face into the waves. We have tightened our rigging and set course. And best of all, we have a sense of the wind of the Holy Spirit filling our sails as we move forward.

Over this time, I have often remembered the words of Psalm 93:4 and given thanks to God for his leading.



MIGHTIER THAN THE THUNDER OF THE GREAT WATERS,
MIGHTIER THAN THE BREAKERS OF THE SEA
- THE LORD ON HIGH IS MIGHTY.
I RUNGA AKE I NGĀ REO O NGĀ WAI MAHA, I NGĀ
TŪĀTEA NUNUI O TE MOANA,
KO IHOWĀ I RUNGA, TE MEA KAHA.

DISCOVER

FOLLOW

SERVE

This Annual Review is full of numbers that show the direction we are heading in, and we are glad for those numbers because they help us know how we are doing. But each number reflects a real person, and these people are important to us here in SUNZ. They are what we are all about!

Let me introduce you to some of the people we are working with as they discover and follow Jesus and serve the world they live in.

- Meet Arabella who led on the Wellington SUPAkidz camp in January. She said it was so cool to see little kids growing their relationship with God. Her church had also nominated her for Exodus Prime, and she led her first ever devotion there. She has since written Light for the Path in the Adventure magazine as well.
- Meet the camper who said, *“The Bible studies reconnected me with the Bible and with God. When I go home, I want to take a step further and get to know God in a much more intimate way.”* We receive many comments like this in our camp evaluations and they are very encouraging. Bible engagement and prayer are so important to us here in SUNZ.
- Meet the girl who told me that her experience on E3 over the summer had given her the confidence to know she could manage away from home at university for the first time. She was drawing on the things she had

learnt about herself and God out in the wilderness. E3 is a wilderness experience run in partnership with A Rocha and Adventure Specialties. Participants travel as a small community through remote areas of Aotearoa New Zealand and focus on strengthening their connection with God, others, and creation.

- Meet Liam who led on the Kaikōura camp. *“Thanks to you and all those who supported camp with prayer- I don’t think I have been part of a more blessed camp - a leadership team committed to service, some miraculous weather, and campers opening their hearts to Christ. I have no doubt prayers were answered.”*
- Meet the WAY2GO attendee who said *“I have been in the role of Team Leader: Children and Families Ministry for only 8 weeks so it was all very useful. Seeing who was out there doing similar work in my region. The ideas around re-establishing the foundations of what’s most important in Children and Families Ministry as we’ve headed back into our churches in a new season after so much online only interaction.”* WAY2GO is our children’s ministry training, and it began 19 years ago this year. It has encouraged and equipped thousands of people across Aotearoa New Zealand over this time.
- Meet Jayden Meads who came through camp leadership as a volunteer and then participated in our Beyond Experience leadership development programme and is now on staff as South Island Camps Facilitator.
- Meet the BE’ers taking leadership positions in SUNZ and in roles as youth workers in their churches and the Synod Committee in Otago/Southland and in their schools.
Here are some comments from these BE participants:
 - *“It is an amazing opportunity to learn about Christian leadership and meet amazing people. It might seem scary but wow you learn so much! Everyone involved in BE*



wants you to grow and develop in your skills.”

- *BE is the best! It will help you understand how God has made you and provide a way for you to strengthen and refine these characteristics.”*

We thank God for the way we have seen the Holy Spirit at work in the lives of the many children and young people who have journeyed with SUNZ this year. Let us continue to pray for them on their faith journey as followers of Christ.

THANK YOU

I want to thank our SUNZ staff team. We have 23 people on the team over FY 2022-23, many of them part time and all of them passionate about the ministry of SUNZ. Whether they are in frontline ministry or behind the scenes supporting ministry work, they are a committed team who have worked hard and are a joy to work with.

I also want to thank the Board who steer SUNZ so capably. We are blessed to have such a quality Board. It has been especially good to have Jason Kelsey as a Board

Intern from Beyond Experience with us.

And of course, SUNZ is mainly run by volunteers. Whether you pray or you lead or cook on a camp or provide transport or whether you are a Kaiārahi or help with training or are on a committee or help with working bees or give financially or contribute in some other way, we are very grateful for you. Thank you!

And finally, God has been very good to us financially again this year and we have finished the year in a healthy place. We are grateful to God and to you our donors, because that means we can grow and develop ministry and help more children and young people discover and follow Jesus and learn to serve the world around them. It is a blessing to be part of God’s work in this way.

**E TE ARIKI, KIA WHAKAPAINGIA
KOE I ĀU MAHI KATO
KIA WHAKAMOEMITI KI A KOE ŌU
IWI KATO
O LORD IN ALL YOUR WORKS BE
PRAISED
LET ALL YOUR PEOPLE BLESS YOU.**



CHILDREN AND FAMILIES

HE HŌNORE, HE KORŌRIA KI TE ATUA
HE MAUNGĀRONGO KI TE WHENUA
HE WHAKAARO PAI KE NGĀ TANGATA KATOA

HONOUR AND GLORY TO GOD
PEACE ON EARTH
GOODWILL TO ALL PEOPLE

It has become my practice to start any training event or gathering I'm at with this prayer. There is more to it, but these are the lines I have memorised so far. I also share my mihi, 'introduction', acknowledging the places and people that have shaped me and continue to do so.

I say this and I refer to it now to place myself, in the city I grew up in, in my family, the one I grew up in and the one my husband and I have together.

We all need to find a place to be, and in my work with Scripture Union New Zealand, it is my passion for all of us to find a place to be in the Christian faith, in our churches, in our faith communities, and of course most importantly for our children and young people to find a place there as well.

This passion is true for the Children and Families Team and all who work for Scripture Union and is summed up well in our mission statement:

We support churches to help children and young people discover Jesus and become life-long disciples who serve the world around them.

I want to acknowledge the privilege it is to work alongside the dedicated and committed people in our Children and Families team. The team continues to punch well above its weight when it comes to serving the church of Aotearoa New Zealand, providing high quality training that Scripture Union has become known for over many years.

Ngā mihi nui (many thanks) to Alison Davies who for 20 years provided admin support for our team, finishing at the end of 2022 for a well-deserved retirement. Alison was a true gift from God to our team and we miss her input and support.

Ngā mihi nui to Andrea Lukin whom we welcomed into the team as the Wellington Children and Families Consultant in August. It has been great for me to hand over the Wellington region to Andrea.

Ngā mihi nui to Andrew Ramsbottom, Annette Osborne and Nigel Winder who collectively have almost 63 years working for Scripture Union. That's huge! They are valued not only in their regions, but nationally and internationally.

Ngā mihi nui to Isla McDonald, our new team administrator, a digital native who copes admirably with all the things we ask of her.

An amazing team we are truly blessed to have as part of the Scripture Union team. A team that includes the many volunteers who willingly give up their time to help and especially those who pray and financially support us. I'd also like to acknowledge our families who give so much too.

Over the past year we have continued to serve the church of Aotearoa New Zealand through:



WAY2GO:

The uncertainty of Covid-19 meant that rather than running the usual three large events, we decided to head to the regions to run smaller training days. This resulted in 13 events across the country, with 396 people attending. The theme, 'First Things First', focussed on four key aspects of faith formation – Connection to God, to God's Big Story, to Family & Whānau and to Others.

Here's some feedback from Waikanae: *I enjoyed the smaller context as I felt I could ask more questions and have more conversations.*

From Whangārei: *I appreciated the team coming north and connecting in a smaller setting and being able to meet with other Children's Ministry people from Northland.*

And from Christchurch: *Appreciate hearing from a variety of voices and being encouraged in the foundation areas. So AWESOME to have it in Christchurch too! Thank you so much for working to bring it here.*

SUPAKIDZ CAMPS:

It was so good to get our camps up and running again and especially for Annette to launch an Intermediate Camp in October. Pōnui Spring Adventure was full at 20 campers and 11 leaders.

This is what a parent had to say: *My daughter has had a couple of not-so-great camp experiences and then Covid where she missed out on a few so I totally noticed the difference in how happy and calm she was when she came home. She had a fabulous time – she and her friend just talked and talked all the way home about how much fun they had. We couldn't get a word in edge ways.*

Nigel ran the Southland SUPAKidZ camp in the same holidays with 54 campers and 20 leaders. This was a huge task but so rewarding.

This is what a parent had to say: *I'm just writing to say that our son enjoyed the camp (and not just the abseiling and zip line), and post-camp has been asking me about favourite Bible verses and songs. He is also enjoying the devotion he received and takes it very seriously when completing the answers.*

Andrew and Andrea worked together in January on the Wellington SUPAKidZ Camp and then Andrew headed back to Auckland to run the one up there the following week. In Auckland there were 25 campers and 9 leaders. In Wellington there were 18 campers and 14 leaders.





These camps are key in leadership development of our young people. Here's what one of our leaders had to say about leading on our Wellington SUPAKidZ camp: *I realised leading on the camp was going to be a lot of responsibility to take on – managing all those little kids, teaching them about God, and having them look up to me. But I was well supported by the SUNZ team, and made some amazing friends, and my faith was stronger than ever before!*



THRIVE:

We continue in discussion with several churches regarding this discipleship mentoring journey. It's a slow burn, but one which we still consider to be vital for the church of Aotearoa New Zealand. In the past year Nigel has journeyed with two churches and Annette has continued to support a church through this process.



CHILDREN'S MINISTRY NETWORK:

Over the past year it has been good to bring people together, not only at WAY2GO but at smaller, more localised gatherings. There is a richness when Children's Ministry people gather for encouragement and resourcing. In Auckland, Andrew ran 6 gatherings with 6 people at each. Nigel gathered 12 people in Dunedin and 8 Invercargill, and 15 attended a Christmas resource evening with Andrea.

An extension of this was an Intergenerational Writer's Workshop that Annette co-ordinated late last year. There were representatives from Anglicans, Baptists, CCCNZ (Open Brethren Heritage Churches), Presbyterians and Scripture Union (Annette, Andrew, and Liz). The result was a guide for those faith communities who are already exploring the benefits of an intergenerational journey and are wanting to be more intentional. There are also three podcasts in the pipeline.



SUPAKIDZ CLUBS AND SURGE:

The decision was made last year to no longer provide administrative support for these groups. The number of groups had been dwindling for some years and the changing environment in our schools, coupled with the effects of Covid-19, meant that it was time to discontinue our direct involvement with school and afterschool clubs. The resources remain available for purchase, and we continue to support and resource church-based community initiatives.



As a team we are also actively involved in Beyond Experience, mentoring young leaders throughout the year and contributing to the intensive training weekend held each year. We also meet with individual children's workers and church leaders, speak at churches, facilitate intergenerational programmes at church camps and make helpful ministry resources available online.

Recently I was feeling anxious about an event. I found myself humming this song:

**OUR GOD IS A GREAT BIG GOD X3
AND HE HOLDS US IN HIS HANDS**

**HE'S HIGHER THAN A SKYSCRAPER
AND DEEPER THAN A SUBMARINE
HE'S WIDER THAN THE UNIVERSE
AND BEYOND MY WILDEST DREAMS
HE'S KNOWN ME AND HE'S LOVED ME
BEFORE THE WORLD BEGAN
HOW WONDERFUL TO BE A PART
OF GOD'S AMAZING PLAN**

**OUR GOD IS A GREAT BIG GOD X3
AND HE HOLDS US IN HIS HANDS²**

Such a comfort when I was feeling stressed, and as I shared it the next day, I reflected that our God is indeed a great big God, who holds us all in His hands, and in particular the children and young people of Aotearoa New Zealand whom we love dearly and as He does too. With that in mind, I'd like to finish with these comforting words from Romans 8:38.

*And I am convinced that nothing can ever separate us from God's love.
Neither death nor life, neither angels nor demons,
neither our fears for today nor our worries about tomorrow
—not even the powers of hell can separate us from God's love.*





YOUTH MINISTRY

Wow what a year! It has been an exciting year with growth in camps and in the work our youth consultants have accomplished between April 2022 and March 2023.

I am immensely proud of all the volunteers who help make things happen. Thank you so much for the way you pitch in and support the ministry we do around the country.

Thank you to my team who have supported each other and the many volunteers we engage with. The team continues to be innovative, and enthusiastic about the ministry they are involved in, and they continue to be compassionate and caring towards each other and to others, as we go on this journey of ministry together.

Even though COVID is becoming a memory it still has big effects on all the ministries we run and support, so please continue to hold all these people up to the Lord in your prayers.

Our team consists of our Youth Consultants:

- Andy Banks (Auckland/Northland)
- Eli Savill (Waikato/BOP)
- Lizzie Moore (Otago/Southland)
- Piper Clare (National P.A)

Then there is our SU Camps Team:
 Natalie Duchesne – North Island Camps Facilitator
 Jayden Meads – South Island Camps Facilitator
 Donna Beech – Camps Administrator, based in the National Office, Wellington.

As you can see there have been a few changes since last year. Anna Squires resigned from the South Island Camps Facilitator role in October 2022. We are grateful for how she shaped this role and handed it over to Jayden Meads who hit the ground running over the summer camps period. Our Wellington Youth Consultant, Aaron McKeivitt finished in July 2022, and we want to thank him for the wonderful work he did for the Wellington region. We are still looking to fill this role.

NEVILLE BARTLEY Youth Team Leader



SO, WHAT'S BEEN HAPPENING?



YOUTH CONSULTANTS:

Our Youth Consultants have continued to support youth pastors and their leaders across the country, providing them with innovative training. They have been dreaming big and creating resources to support youth ministries in these extraordinary times we are experiencing.

Our Youth Leaders training events which are called ANAMATA, have been going well and in March 2023, we ran 3 large events in Dunedin, Wellington, and Auckland, with plans to hold regional events.

Lizzie Moore will now be in an exciting new stage of life, being a first-time mum. Lizzie is taking maternity leave so please look out for the announcement of the person who will be filling in for her while she is away. Thank you Lizzie for the amazing job you have been doing in Otago and Southland and we pray God will bless you and your husband Ray as you embark on this journey of parenthood.



MENTAL HEALTH FIRST AID

A new string to our bow is the ability to provide a fully accredited 2-day Mental Health First Aid Certificate course. Andy Banks and I attained certification by March 2023, and are now fully accredited presenters. This has been challenging but is a wonderful opportunity to equip the church in the area of mental health and to provide training and accreditation at a cost that is affordable for them. Please look out for us running an event near you.



SU CAMPS:

Despite the rise in the cost of living the team and the volunteers have continued to work hard to maintain the standard of quality camps at a reasonable cost to the young people who attend them. Sincere thanks to everyone involved in the 20 youth camps attended by 465 campers.



SUNZ ANNUAL REVIEW 2023



E3:

E3 is a three-way partnership with Scripture Union NZ, A Rocha Aotearoa New Zealand, and Adventure Specialties Trust. The 11-day expeditions in December 2022 were attended by 31 Year 12-13 school students (ages 17-18). The locations were Central North Island, Canterbury, and Otago. Traveling as a small community through remote wilderness areas of Aotearoa New Zealand, each expedition focussed on developing the character of participants and strengthening their connections with God, others, and creation.

SUNZ is grateful to the huge team of volunteers who help make the E3 happen. From Scripture Union staff to young expedition leaders, churches allowing campers to sleep in the halls, and transport teams including back-country station owners helicoptering tramping gear: thank you.



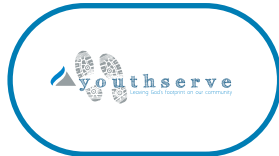
EXODUS PRIME:

Exodus Prime (EP) young leader training camp was in January 2023, at El Rancho, Waikanae, attended by 15 young people. This mentorship programme equips young Christians to be leaders of impact, today and in the future. Churches nominate young leaders to the EP programme.



ĀPŌPŌ:

The Āpōpō Mental Health & Suicide programme includes helpful information, tips and tools presented by a trained facilitator and their team of helpers. It is super interactive, involving games, activities, and opportunities for participants to practise what they have learned by role playing in a safe environment. We held workshops and facilitator training in September 2022 for 500 participants in 2 schools and 80 in 2 youth groups. Andy Banks & I have spent time designing new versions for secondary schools and youth groups. Please pray for the growth of this much-needed ministry.



YOUTHSERVE:

YOUTHSERVE helps young people follow Jesus and put their faith into action in their local community using a mission-based approach. There were no programmes in this financial year as individuals and groups were still feeling the effects of COVID-related challenges.



IT'S YOUR MOVE:

It's your move was run at Rangeview Intermediate with about 200 students. The youth and resources department sold 212 It's Your Move books to churches and individuals. On 31 March 2023, we had 271 books of the updated version still in stock. Please pray for us as we look at refreshing the book and the school programme, and please pray for doors to open for us to get into schools.



ENGAGE:

Daily Bible Reading

ENGAGE DAILY BIBLE READING APP:

Our Engage Bible App provides daily audio Bible readings in both Te Reo Māori and English. It worked well and was used quite a lot. The launch number was 1624. Unfortunately, we discovered this app had been removed from the Apple site and we also had technical issues that meant user numbers were heavily reduced. This has now been fixed and shortly we will be adding video sessions to the app.

Despite the challenges, it was an exciting year that has set us up for an exciting future. The SUNZ Youth team continues to look for innovative ways to continue to engage young people and support churches and their ministries to young people.

Thank you for all your wonderful support and may God bless you and your whānau in the year ahead. ▲

BEYOND

EXPERIENCE



Our BE team began 2023 with the hope that major disruptions were past, however, disruption is an inevitable part of life. Beyond Experience (BE) is partially about modelling leadership and response in times of unsettling circumstances. We created BE with the kaupapa that we can immerse our leadership in the faith that Jesus will lead us through times of disruption.

By now I hope you have some knowledge or an interaction with BE. It might be subtle or more direct. However, that's the essence of BE, it is there behind the scenes supporting so many of the other swivelling parts of our SUNZ movement.

Some reflections from the previous year include:

- The diverse range of camps that BE'ers are leading or instructing on, including our E3 11-day expeditions.
- This past year we farewelled Emma Beckett from the BE administration role, and welcomed Beth Coates, who participated in BE for two years (2021-22). This three day per week role covers administration and project direction. I am personally grateful to Beth's commitment and creativity.
- We have placed a major emphasis on our second year BE'ers. Their experience differs from a first year where they are invited to complete a Stream

Project (SP) drawing from themes of bicultural journey, theology, outdoor qualifications and more. They receive coaching (Top5 CliftonStrengths) and are partnered with Kaiārahi who have some expertise in their chosen SP. Their SP must meet several criteria, including fulfilling the mission of SUNZ.

- It is exciting to share the nature and scope of these SPs, including a Mental Health Acute Response Procedure for camps; a calculator that determines an SUNZ camps carbon footprint; what evangelism looks like in SUNZ camps; inviting people to better understand the intersection between our faith a Te Reo Māori; nationally recognized outdoor qualifications. It is energizing for these young adults and invites them to live out their faith, demonstrate leadership, create a sustainable resource for SUNZ, and ultimately do their part to build the Kingdom of God.
- This year we also started BE Kindred. This arose out of a desire to facilitate more formative experiences for young adults beyond the once-a-month mentor session with Kaiārahi. Once again, we are beyond thankful for The Longview Trust and their investment and support in this vision.
- We have two participants, Imogen McQueen & Jack Wilson, as BE Kindred who spend a minimum of one day a week working for SUNZ. This includes immersing themselves in various projects related to our ministry. They are part of the SUNZ staff team

and attended SUNZ Staff Retreat in March. We meet weekly with them for spiritual practices with the remainder of their time taking one class at Laidlaw. Kindred has been a great opportunity for us to spend intentional time with Imogen & Jack and demonstrate Christ-centred leadership to them from a long-term perspective.

- The other highlight of this year was the BE Retreat in late April. This is our third year of this retreat, and it adds and enhances so much of the Kaupapa of BE. Around 64 BE'ers and Kaiārahi gathered at El Rancho, Waikanae to focus on the theme, 'The Generosity of Leadership.' We biblically engaged Romans 12 and facilitated small groups (led by second year BE'ers). We arranged a panel discussion with three people connected to SUNZ who live out their faith and leadership in secular work environments. We also planted natives on a local conservation project area which nearby SUNZ members support. It was inspiring to witness BE'ers delegating tasks and activities throughout the weekend. And finally,

it was a joy to share a meal with local SUNZ supporters who represent years of dedication to the SUNZ movement. It was a special intergenerational time, sharing experiences of faith and leadership.

- As I conclude I pause to say, "whakawhetai ki te atua, Thanks be to God" to all the Kaiārahi who have faithfully served this past year. Their listening and fervour for the Kingdom of God to grow is expressed well through BE. Thank you for being part of a movement that is definitely 'something in the now & somewhere in the next.'

We continue to crave your prayers, especially the need for new Kaiārahi to mentor our BE participants. Please pray for these young adults as they seek to live out the intersection of their faith and leadership now and in the future.

BE Retreat will be in Ōtautahi in 2024, so we look forward to connecting with the wonderful extended SUNZ whānau there.

Peace of Christ. 🌿



INTERNATIONAL

ANNETTE OSBORNE Children & Families Consultant

Since 2017, I have been a member of the Scripture Union International team. This constitutes 40% of my hours, as a secondment from SUNZ. Within this, I am a part of the Ministry Specialist Team, alongside Becky Swamickan (India), and Terry Williams (Australia). This past year we have had two areas of focus.

CHILD PROTECTION AND SAFEGUARDING:

This has been a major project for the past three years, with three levels of training being provided. We have seen significant investment and progress made.

- 84% of eligible movements have been trained
- 68 of these movements have developed a Child Protection Policy, and 29 are in the process.

Our focus this year has been training in how to respond to critical incidents. This has involved hosting briefings for National Directors. Our Level 1 and 2 training material has been made available for use by movements to use with their staff and volunteers.

BIBLE ENGAGEMENT:

Coming out of the Bible Engagement Consultation in

March 2022, we created four main strategies to progress this project.

- The creation of a focus group to oversee the project.
- Market Squares: Four times a year we host online gatherings where movements from around the world can showcase their Bible Engagement resources. These resources are freely available to the SU Global family. We have hosted two so far, and they have been well received. Neville Bartley shared recently about the development of the Engage Bible Reading App, which has sparked great conversations.
- Bible Engagement Hub: The creation of a library of great resources from SU movements around the world, all free to download, adapt and use.
- Resource Creation Workshops: This year we will host two workshops in Uganda and Sri Lanka, to support local people to create their own resources.

Thank you for your prayer and support over this past year, as we emerge from Covid-related travel restrictions. This has enabled us to meet several times. These photos show the whole SUI team during our May meeting in Kuala Lumpur, and the Ministry Team in Brisbane in January, along with our International Director, Monika Kuschmierz.



HILARY HAGUE National Director
NATALIE DUCHESNE North Island Camps Facilitator

ENVIRONMENTAL SUSTAINABILITY

KO TĀTOU NGĀ KAITIAKI O AOTEAROA

The Board of Scripture Union recognise SUNZ's role as Kaitiaki in New Zealand and expects that SUNZ staff take all reasonable steps to implement SUNZ procedures and policies in ways that promote environmental responsibility and stewardship.



These are significant words from the Board and a directive for Scripture Union New Zealand – a call to stewardship of creation that has been present in our ministries organically for a while, but which has this year been formalised.

Kaitiaki is a te reo Māori word, rich with meaning. It describes a person or group which acts as a carer or guardian. In kaitiakitanga we see a parallel with the beginning of Genesis when the cosmos and everything in it is brought to life and humankind is given a specific role to play.

This Board mandate is a 'stretching goal' that is bringing good theological conversations to the fore and is encouraging environmental sustainability.

Just a few examples of the ways we have begun to work this out are:

- Camps are being encouraged to run sustainably with some success - notably on the July camp at our iconic SUNZ Adventure Lodge, where we celebrated our best ever result by finishing camp with only one bag of rubbish for 30 people over 6 days. Sustain camp, run in partnership with A Rocha was



designed to encourage young people to contribute sustainably to the world around them as well as sustaining their relationship with God.

- A number of second year Beyond Experience participants are working to grow their leadership within this area. They supported with a kaiārahi (mentor) and they are looking at issues like engaging with the principles and practices of kaitiakitanga as a response to biodiversity loss in Aotearoa.
- Our E3 wilderness expeditions, run in partnership with Adventure Specialities and A Rocha, weave leadership development, faith formation and creation care together within the beauty of back-country Aotearoa.
- We are looking carefully at our offices including composting, recycling, paying attention to travel and buying carbon credits for flights. We have moved to more online advertising and use recycled paper for printing where possible. Check out this Annual Review! We are also using recyclable plastic on our magazine mailouts.

We have a way to go but we are committed to the journey. We looking forward to sharing with you as we learn to live out the words of the Board. ▲

RESOURCES

FOR LIFE



Income from RFL sales decreased 8.81% from FY21-22 to FY22-23, with a drop in Gross Profit of 7.61%, from \$52,132.00 to \$48,306.00. There was a noticeable decrease in sales at seasonal times, Easter and Christmas with expected sales not eventuating. RFL also faced stockouts caused by delivery delays due to international freight logistics and a major reorganisation of book distribution in October with Marston Book Services (publisher of SU book titles) taking over distribution for several companies. SUNZ purchase SU Brand titles from Marston at 60% discount.

Sales of SU Brand titles decreased 7.75% with both the continued reduction of Scripture Union published books in print, and the unsuitability of outdated print titles.

Sales of Bible Reading Guides (*Daily Bread & Encounter with God*) remained on par with FY21-22 at \$48,000.00 with active promotion and prayer to maintain subscriber numbers. SUNZ sold 4954 Bible reading guides (both titles) between 1 April 2022 – 31 March 2023. SUNZ pay 2% royalties to Scripture Union UK for the content.

Te Tia Cook Island Māori reading cards accounted for 6.88% of total sales. RFL collaborated with Nga Mataio, General Secretary of Cook Islands Christian Church to design and print the Scripture Union Bible reading syllabus (the

Bible references as in *Daily Bread & Encounter with God*), on 7000 reading cards and distribute to CICC ministers and members across Cook Islands, New Zealand & Australia.

Youth department authorised write off \$1,644.38 value of NUA faulty USBs. Total stock value on hand as of 31 March 2023 was \$16,484.74.

RFL received total donations of \$10,225.14, a 49.68% decrease from FY21-22. Part of this drop may be attributed to ramifications of an e-invoice trial with a credit card payment link, which did not allow for a payment top-up donation on subscription renewal invoices for Bible reading guides.

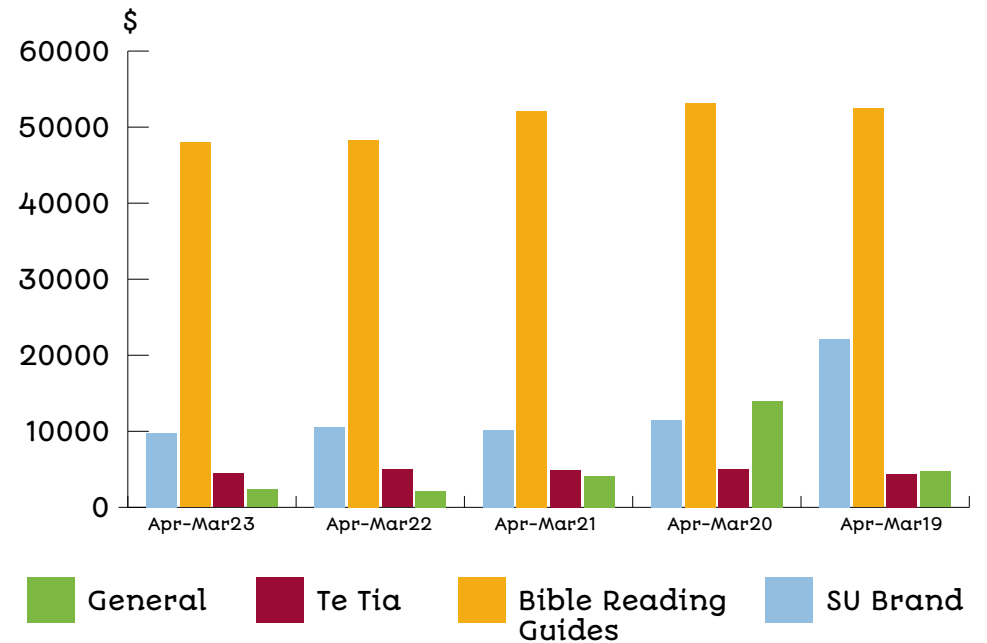
Operating expenses have increased by 14.39% being an increase in weekly work hours, promotions, and postage costs. Promotions is the design cost of Bible Reading Guides previously costed onto the purchase unit cost of the books. Postage costs increased by 23.26% with all postal delivery services increasing their rates from 1 July 2022.

RFL ended FY22-23 in a break-even financial situation.

THANK YOU FOR YOUR SUPPORT, ENCOURAGEMENT AND PROMOTION OF SCRIPTURE UNION RESOURCES. 🙏



SUNZ RESOURCE SALES FINANCIAL YEARS 2019 - 2023





THANKSGIVING

VOLUNTEERS & SUPPORTERS

Hundreds of children and young people experience the transformative power of the Gospel each year, all made possible by these extraordinary individuals:

- **Camp Volunteers:** Without their hard work and dedication we would not be able to run our camps. From cooking to running activities and Bible engagement sessions, our camp volunteers play a crucial role in introducing children and young people to Jesus and nurturing their faith.
 - **Event Support Teams:** These exceptional teams help with SUNZ conferences, workshops, and training events. From accommodation, managing sites, and serving refreshments, their invaluable contributions ensure the essential task of equipping and empowering youth and children's workers in their ministries.
 - **Prayer Groups:** Twelve prayer warriors nationwide pray regularly for SUNZ. Their unwavering commitment to prayer is valued, and we are truly thankful to those who uplift us and our ministries.
 - **Administrators:** Many individuals volunteer their time and skills to ensure the smooth operation of SUNZ behind the scenes.
- Their valuable service ensures everything runs smoothly.
 - **Supporters:** Our incredible supporters generously give, fervently pray, and actively spread the word about SUNZ. We continually witness God's provision through their support.
 - *1259 individuals, trusts and businesses supported us financially over the FY 22-23 year.*
 - *721 supporters received the bimonthly SUNZ Prayer Adventure newsletter encouraging them to remember SUNZ in their daily prayers.*
 - *1539 people received staff prayer letters, keeping them up to date with staff workers' news, and supporting them in prayer.*
 - *39 Bible Reading Representatives helped to promote and distribute our Bible Reading Guides to groups and churches around New Zealand.*

BOARD

We give thanks for the dedication and faithful service of the SUNZ Board and Finance Committee:

- Neil Walbran (Chair)
- Ruth Early (Treasurer)
- Hilary Hague (National Director)
- John Cleary
- Jason Masters
- Mark Nichols
- Meredith MacKenzie (Observer)
- Jason Kelsey (Intern)

BEQUESTS

We are humbled and honoured to have been remembered by the following people in their final wishes:

- Nellie Florence Evans
- June Lorraine Garthwaite
- Susan Reyngoud
- Marjorie Foulkes
- Margaret Peapell
- Bruce Archibald Short
- Daphne Joy Hickman
- D M Riddell

FINANCE COMMITTEE

We appreciate their gifts, which will bless the children and young people we serve

- Ruth Early (Chair)
- Alastair Boulton
- Hilary Hague
- Meredith MacKenzie
- Neil Walbran

TRUSTS, CHURCHES, AND ORGANISATIONS WHO GAVE \$1,000 AND ABOVE:

- | | | |
|--------------------------------------|---|---|
| Ann Sinclair Charitable Trust | Koinonia Trust | Shepton Trust |
| Arohanui Charitable Trust | KB and RJ Taylor Charitable Trust | St Chads Anglican Church |
| Bollard Charitable Trust | Trust | St Michael & All Angels Anglican Church |
| Broderick Road Chapel Church@Otatara | Lakeside Presbyterian Church | Stoney Farm Charitable Trust |
| COGS Auckland City | Lichfield Lands Incorporated | Soul Purpose Trust 1999 |
| COGS Manukau | Light of Life Chinese Church | The Synod of Otago & Southland |
| COGS Waitakere City | Lochiel Community Church | The Kings Arms Church |
| Cornelius Charitable Trust | Longview Trust | Tidd Foundation Incorporated |
| David Ellison Charitable Trust | Max Architectural Design Charitable Trust | Titahi Bay Community Church |
| Daphne Ford Trust | Merit Car Company | Waidale Missionary Trust |
| Decal Trust | Milford Baptist Church | Wallis Trust |
| Dimock Charitable Trust | Nelson Christian Trust | W Crighton Charitable Company Ltd |
| Eden Community Church | Norwood Trust | Wellington South Baptist Church |
| Edendale Christian Fellowship | One T Six Trust | Whanganui Central Baptist Church |
| Edenvue Trust | Otama Missionary Trust | Church |
| Fraser Charitable Trust | Papakura East Presbyterian Church | Wilberforce Foundation |
| Gateway Church | PC & HPW Green Charitable Trust | Wide Open Spaces Trust |
| Glenfield Community Church | Trust | Windsor Community Church |
| GraceCity Church | Porirua East Gospel Chapel | Missions Group |
| G & S Vickers Charitable Trust | River Valley Baptist Church | Wyndham Presbyterian Church |
| Gumgo Trust | Rosedale Bible Chapel | |
| Iona Properties Ltd | Roy Owen Dixey Trust | |
| Jones Missionary Trust | | |

WE HAVE RECEIVED MANY OTHER GENEROUS GIFTS AS WELL. THANK YOU!



FINANCIALS

OPERATING RESULTS

We continue to be grateful to God for His provision and faithfulness, ensuring that SUNZ needs are fulfilled. Our supporters have been especially generous resulting in SUNZ reporting an operating surplus of \$23,950 for the 2022-2023 financial year. This compares to an operating surplus of \$58,454 in the previous year.

Through FY2022-23, total revenue increased by \$219,911 when compared to the previous year. Although COVID had less of an impact this year, many operational adjustments were required as SUNZ navigated the post-pandemic environment.

Total operating expenses increased by \$254,414 in FY2022-23 compared to the previous year due to the increase in camp and event costs.

FINANCIAL POSITION

SUNZ continues to be in a stable financial position. Total cash and current assets on the balance sheet at 31 March 2023 were \$2,658,765. Equity includes the Development Fund of \$931,156 which is set aside for special projects in the future.

To enable SUNZ to better manage its resources and to assess the performance of the organisational activities, resources are categorised into the Funds documented in Table 1.

FINANCIAL PERFORMANCE BY FUND YEAR TO 31 MARCH 2023							
(NZ\$)	Scripture Union Total	General Fund	Team Support Fund	Development Fund	Camp Working Group Funds	Other Minor Funds	Property Revaluation Reserve
Reported Annual Surplus/ (Deficit)	23,950	18,571	7,935	(9,633)	3,424	3,654	-
Equity	3,455,640	815,909	199,708	931,156	155,048	100,906	1,252,913

TABLE 1

These summary financial statements have been extracted from SUNZ full financial statements. Summary financial statements do not provide the same level of information/ understanding as full financial statements. The full financial statements for 31 March 2023 were approved by the SUNZ Board on 6th July 2023. The following financial summary was audited by accountants BDO who provided an unqualified audit opinion for the year ending 31 March 2023.

The full financial statements for the period ending 31 March 2023 include an explicit and unreserved statement of compliance with Public Benefit Entity Accounting Standards - Reduced Disclosure Regime, and has been prepared in accordance with these standards.

These summary financial statements have been prepared in accordance with the following accounting standard released by the External Reporting Board: Public Benefit Entity Financial Reporting Standard 43. A copy of the full financial statements may be obtained by writing to Scripture Union, PO Box 760, Wellington 6140.



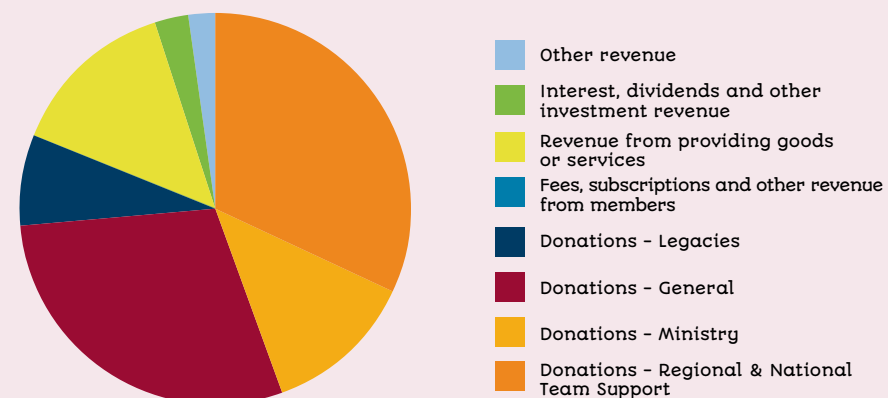
Scripture Union New Zealand Incorporated
STATEMENT OF FINANCIAL PERFORMANCE
FOR THE YEAR ENDED 31 MARCH 2023

	2023 (NZD)	2022 (NZD)
Revenue		
Donations - Regional & National Team Support	705,788	686,158
Donations - Ministry	271,926	322,175
Donations - General	644,769	576,733
Donations - Legacies	162,550	92,111
Fees, subscriptions and other revenue from members	200	1,061
Revenue from providing goods or services	306,679	263,688
Interest, dividends and other investment revenue	63,194	24,241
Other revenue	44,236	13,263
Total Revenue	2,199,342	1,979,431

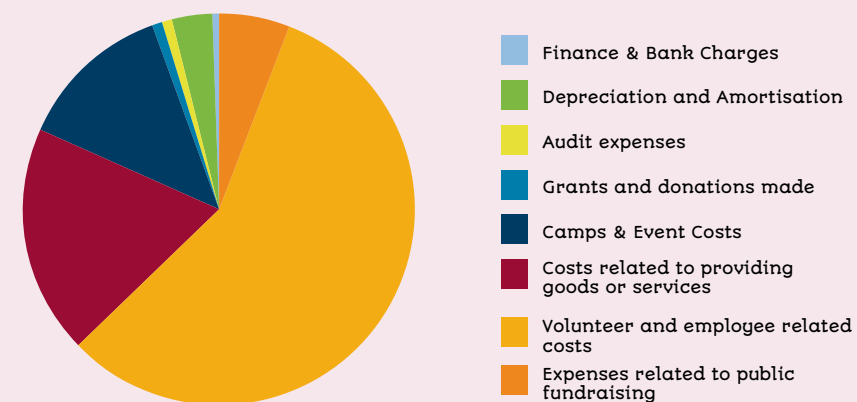
Expenses		
Expenses related to public fundraising	128,803	129,864
Volunteer and employee related costs	1,242,293	1,142,379
Costs related to providing goods or services	411,427	319,379
Camps & Event Costs	272,937	213,952
Grants and donations made	20,000	19,000
Audit expenses	17,439	16,532
Depreciation and Amortisation	75,292	73,476
Finance & Bank Charges	7,201	6,394
Total Expenses	2,175,391	1,920,977
Surplus/(Deficit) for the Year from Continuing Operations	23,950	58,454

Surplus/(Deficit) for the Year	23,950	58,454
---------------------------------------	---------------	---------------

INCOME FOR FINANCIAL YEAR 2022/23



EXPENDITURE FOR FINANCIAL YEAR 2022/23



Scripture Union New Zealand Incorporated
STATEMENT OF FINANCIAL POSITION
AS AT 31 MARCH 2023

	2023 (NZD)	2022 (NZD)
Current Assets		
Bank accounts and cash	2,459,417	2,438,090
Debtors and prepayments	182,864	47,004
Inventory	16,485	18,684
Total Current Assets	2,658,765	2,503,777
Non-Current Assets		
Property, plant and equipment	1,650,438	1,682,317
Investments	-	-
Total Non-Current Assets	1,650,438	1,682,317
Total Assets	4,309,203	4,186,094
Liabilities		
Current Liabilities		
Bank overdraft	-	-
Creditors and accrued expenses	102,812	111,514
Employee costs payable	164,118	155,861
Unused donations and grants with conditions	493,054	397,205
Total Current Liabilities	759,983	664,580
Total Non-Current liabilities	93,581	89,826
Total Liabilities	853,564	754,406
Total Assets less Total Liabilities (Net Assets)	3,455,640	3,431,690
Total Accumulated Funds	3,455,640	3,431,690

Scripture Union New Zealand Incorporated
STATEMENT OF CASH FLOWS
FOR THE YEAR ENDED 31 MARCH 2023

	2023 (NZD)	2022 (NZD)
Cash Flows from Operating Activities		
Cash was received from:		
Donations, fundraising and other similar receipts	1,878,578	1,848,521
Fees, subscriptions and other receipts from members	175,933	134,458
Receipts from providing goods or services	67,070	145,900
Interest, dividends and other investment receipts	48,291	25,276
Cash was applied to:		
Payments to employees	(1,189,327)	(1,111,169)
Payments to suppliers	(890,627)	(687,040)
Donations or grants paid	(20,000)	(19,000)
Net GST	(5,580)	494
Net Cash Flows from Operating Activities	64,337	337,439
Cash flows from Investing and Financing Activities		
Cash was received from:		
Receipts from the sale of investments	-	180,000
Receipts from the sale of property, plant and equipment	2,500	
Cash was applied to:		
Payments to acquire property, plant and equipment	(45,511)	(59,677)
Net Cash Flows from Investing and Financing Activities	(43,010)	120,324
Net Increase / (Decrease) in Cash	21,327	457,763
Opening Cash	2,438,090	1,980,328
Closing Cash	2,459,417	2,438,090
This is represented by:		
Bank Accounts and Cash	2,459,417	2,438,090

Scripture Union New Zealand Incorporated
STATEMENT OF CHANGES IN EQUITY
FOR THE YEAR ENDED 31 MARCH 2023

FOR THE YEAR ENDED 31 MARCH 2023	TOTAL NZD	GENERAL FUND	REVALUATION RESERVE	TEAM SUPPORT FUND	J& M LAIRD FUND	KERSLEY FUND	DEVELOPMENT FUND	CAMP & WORKING GROUP FUNDS
BALANCE AT BEGINNING OF YEAR	3,431,690	797,339	1,252,913	191,773	4,345	92,908	940,789	151,624
Reserve transfers in	64,737	64,737						
Reserve transfers out	(64,737)						(33,250)	(31,487)
Surplus or deficit from continuing operations	23,950	(46,166)	-	7,935	118	3,536	23,616	34,912
“Other comprehensive income and expenses -Gain/losses on revaluation of property”								
Total Surplus/(Deficit) for the year	23,950	18,571	-	7,935	118	3,536	(9,633)	3,424
BALANCE AT END OF YEAR	3,455,640	815,909	1,252,913	199,708	4,463	96,444	931,156	155,048

FOR THE YEAR ENDED 31 MARCH 2022	TOTAL NZD	GENERAL FUND	REVALUATION RESERVE	TEAM SUPPORT FUND	J& M LAIRD FUND	KERSLEY FUND	DEVELOPMENT FUND	CAMP & WORKING GROUP FUNDS
BALANCE AT BEGINNING OF YEAR	3,373,236	679,654	1,252,913	197,572	5,268	91,551	950,521	195,761
Reserve transfers in	38,769	38,769						
Reserve transfers out	(38,769)						(12,990)	(25,779)
Surplus or deficit from continuing operations	58,454	78,916	-	(5,800)	(922)	1,359	3,260	(18,358)
“Other comprehensive income and expenses -Gain/losses on revaluation of property”	0							
Total Surplus/(Deficit) for the year	58,454	117,684	-	(5,800)	(923)	1,359	(9,730)	(44,137)
BALANCE AT END OF YEAR	3,431,690	797,338	1,252,913	191,773	4,345	92,908	940,789	151,624

Wellington

National Support Centre

info@sunz.org.nz
04 385 0485 0508 423 836
PO Box 760
Wellington 6140
9A Oxford Terrace
Mt Cook
Wellington 6021

Auckland

Northern Regional Office

auckland@sunz.org.nz
09 379 9363
PO Box 112123
Penrose
Auckland 1642
60 Rockfield Road
Penrose Central
Auckland 1061

Invercargill

Southern Regional Office

03 214 1834
PO Box 7
Invercargill 9840
137 Yarrow Street
Invercargill 9810

He rama tāu kupu ki ōku waewae · Your word is a lamp to my feet Psalm 119:105 

SUNZ is a member of the Scripture Union International Family

Producer: Peilin Cheng Editor: AnnaMarie Slessor Designer: Rachel Hay